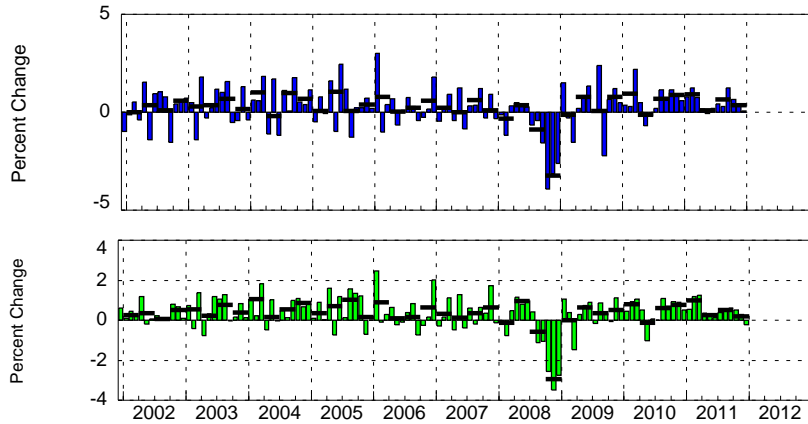
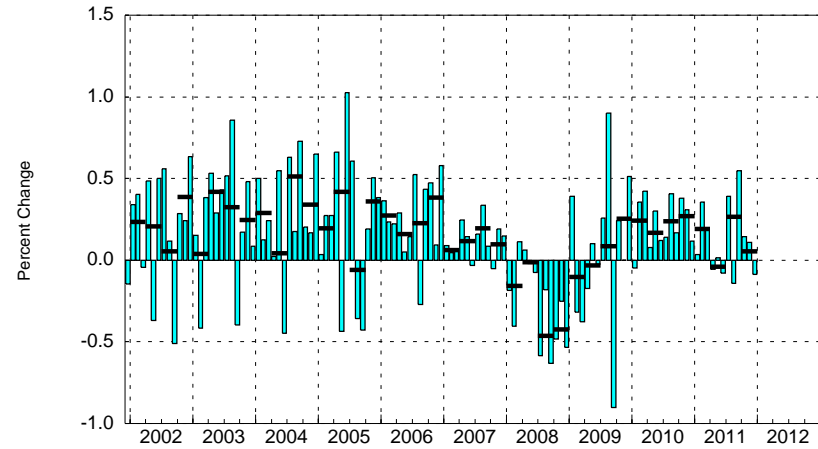


RETAIL SALES Seasonally Adjusted



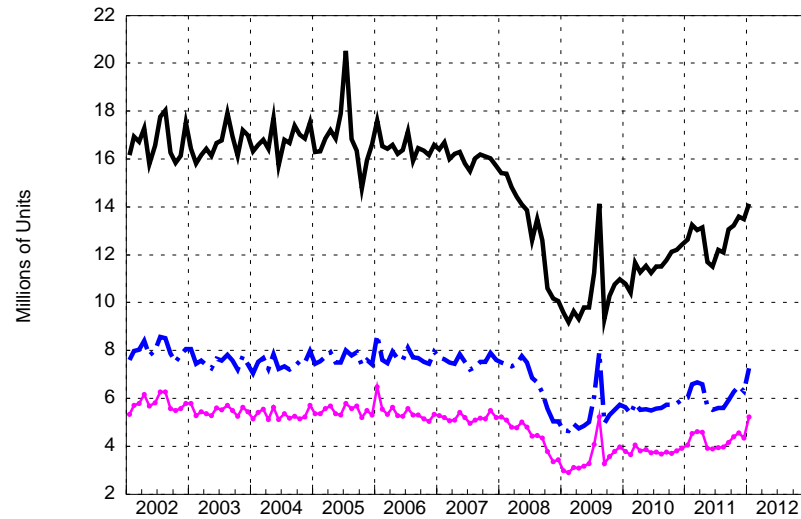
Note: Total (Blue), Excluding Autos (Green), Quarterly Average (black dash)
Source: Census Bureau

REAL PERSONAL CONSUMPTION EXPENDITURES Seasonally Adjusted



Note: Quarterly Average (black dash)
Source: Bureau of Economic Analysis

LIGHT MOTOR VEHICLE SALES Seasonally Adjusted Annual Rate



Note: Total Cars and Light Trucks (Black), Domestic and Foreign Cars (Blue), Domestic Cars (Magenta)
Source: Bureau of Economic Analysis

02.10.12