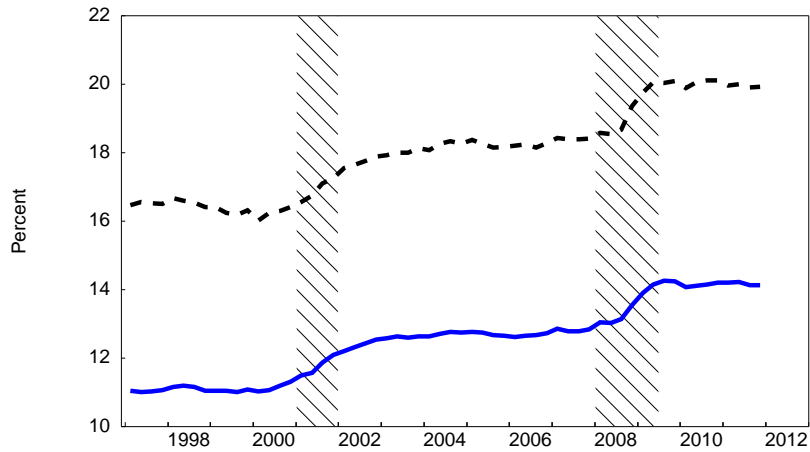
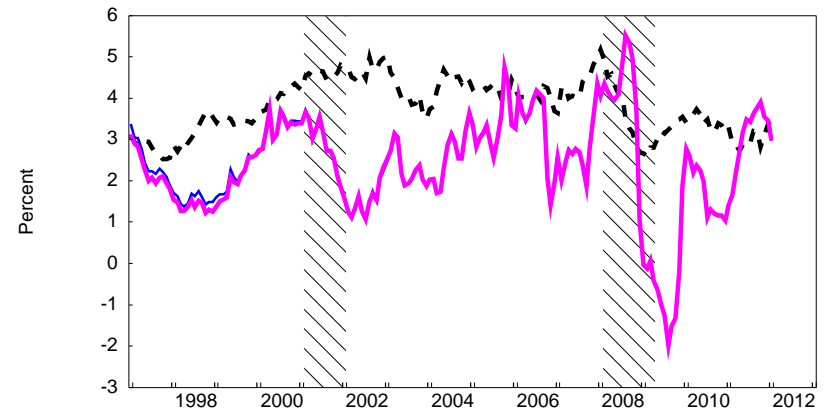


Medical Care Expenditures
(Percent of Nominal PCE and Nominal GDP)



Note: % of Personal Consumption Expenditure (Black), % of GDP (Blue)
Source: Bureau of Economic Analysis

Medical Care Inflation
(Percent change over a year ago)



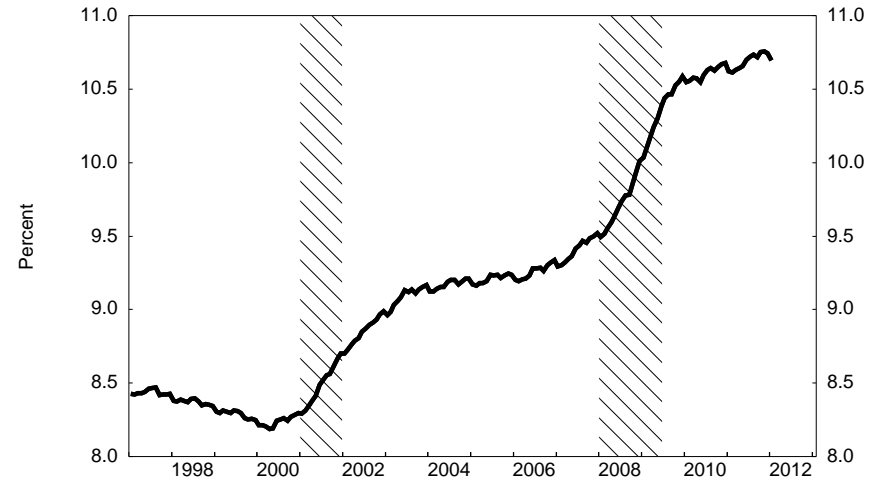
Note: Medical Care Component (Black), Total CPI (Blue),
Total CPI Methodologically Consistent*
Note: Methodologically consistent series uses FRBNY seasonals before 1999
Source: Bureau of Labor Statistics

Growth of Health Care Employment
(Percent change over a year ago)



Note: Total Nonfarm Payroll (Black), Health Care Employment (Blue)
Source: Bureau of Labor Statistics

Health Care Employment
(Percent of Total Nonfarm Employment)



Source: Bureau of Labor Statistics