



FEDERAL RESERVE BANK *of* NEW YORK

# The Shape of the Recovery

Charts presented by Joseph Tracy, Executive Vice President  
Annual Economic Summit and Outlook 2011  
Connecticut Business and Industry Association/MetroHartford Alliance  
Hartford, CT  
January 7, 2011

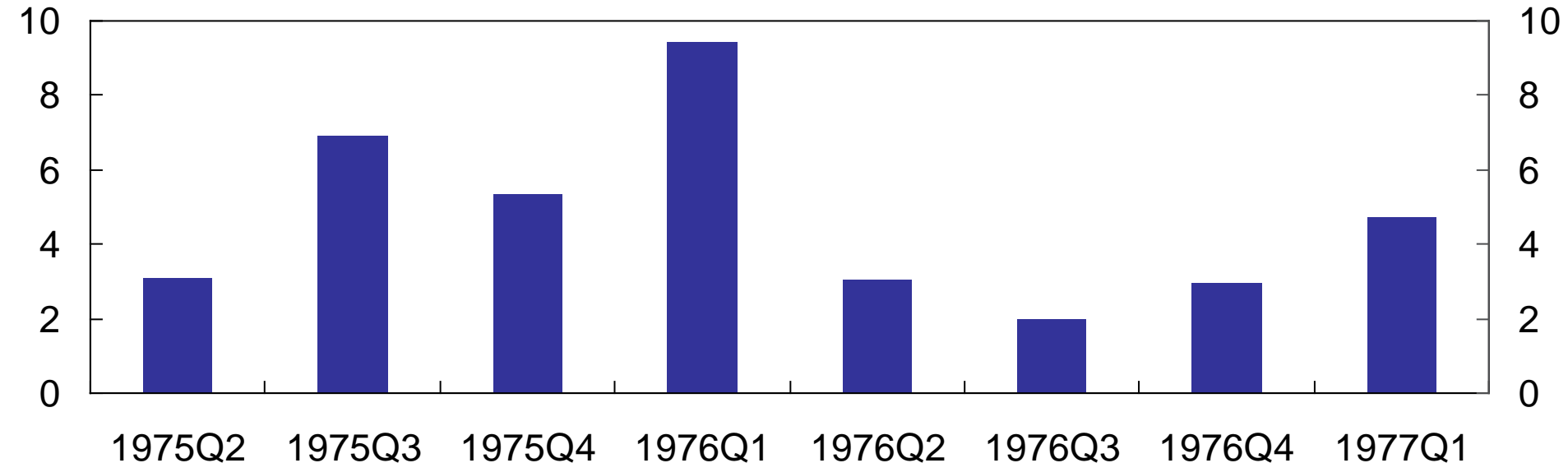


# Post-Recession Growth Rates

## 1973-1975 Cycle: 1975Q1 Trough

% Change – AR

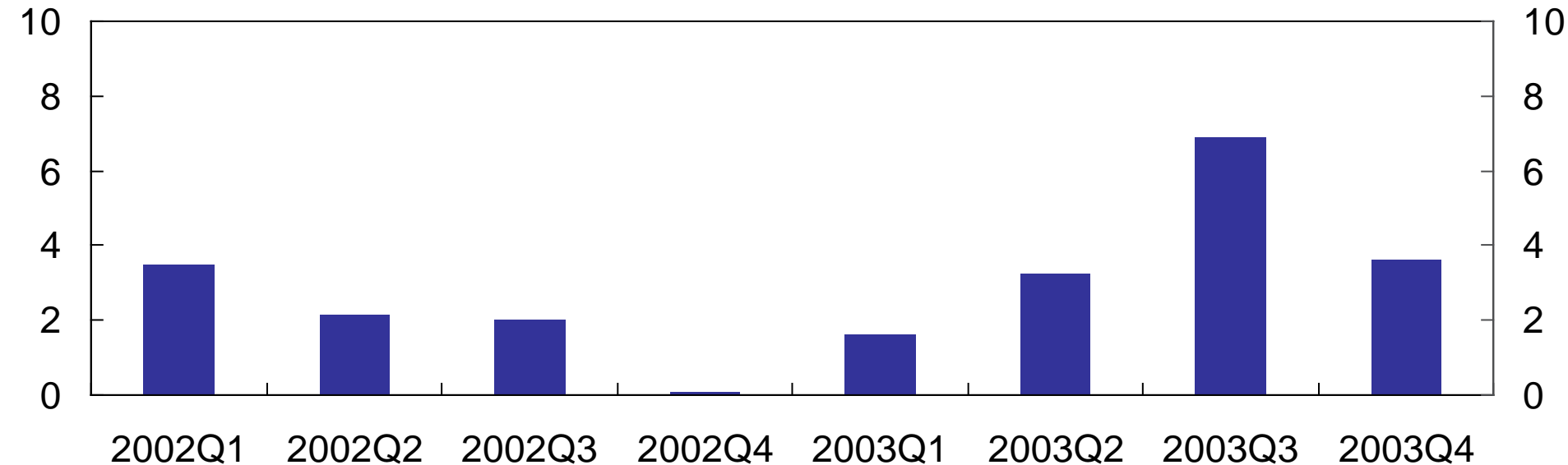
% Change – AR



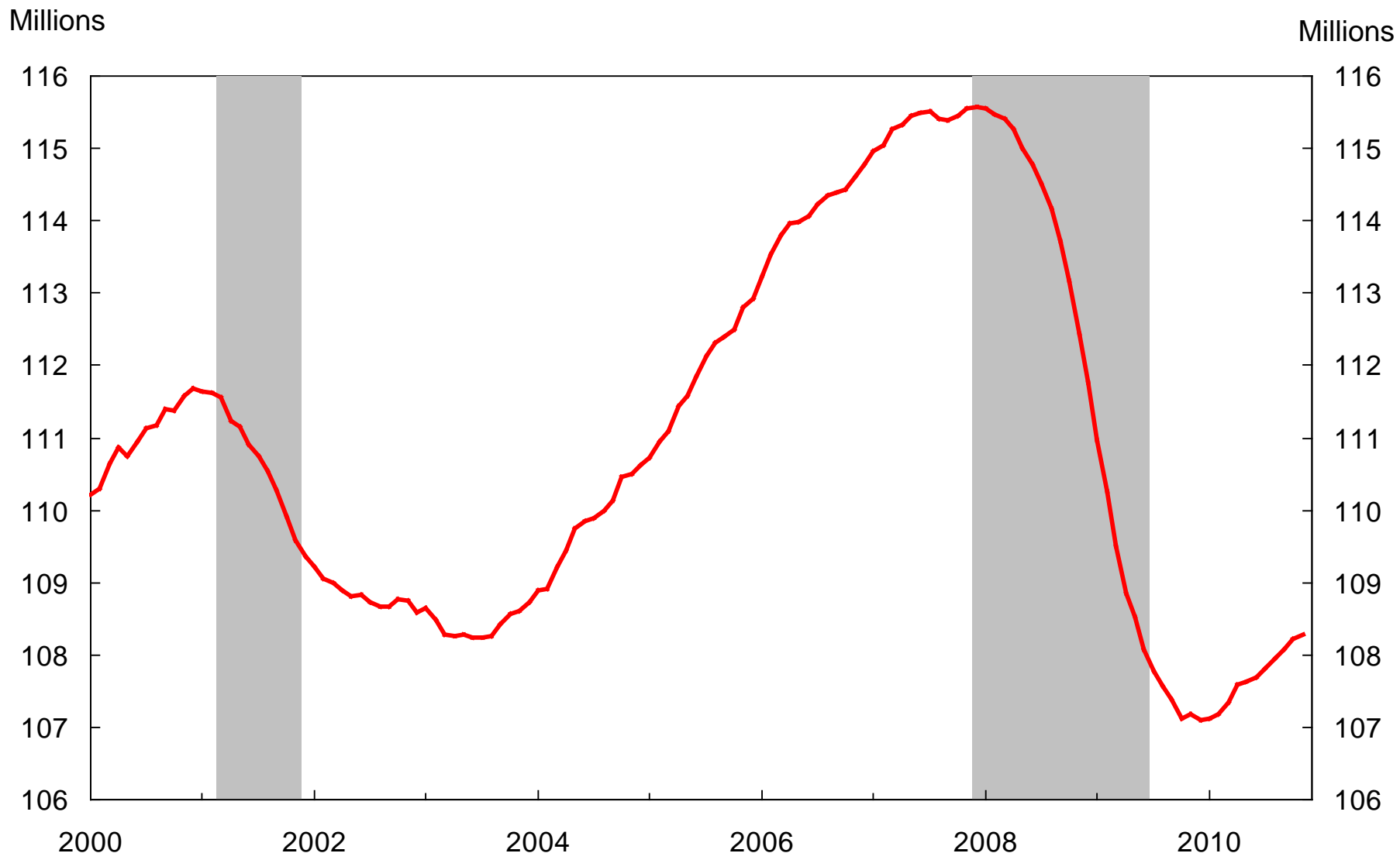
## 2001 Cycle: 2001Q4 Trough

% Change – AR

% Change – AR



# Private Non-Farm Payroll Employment

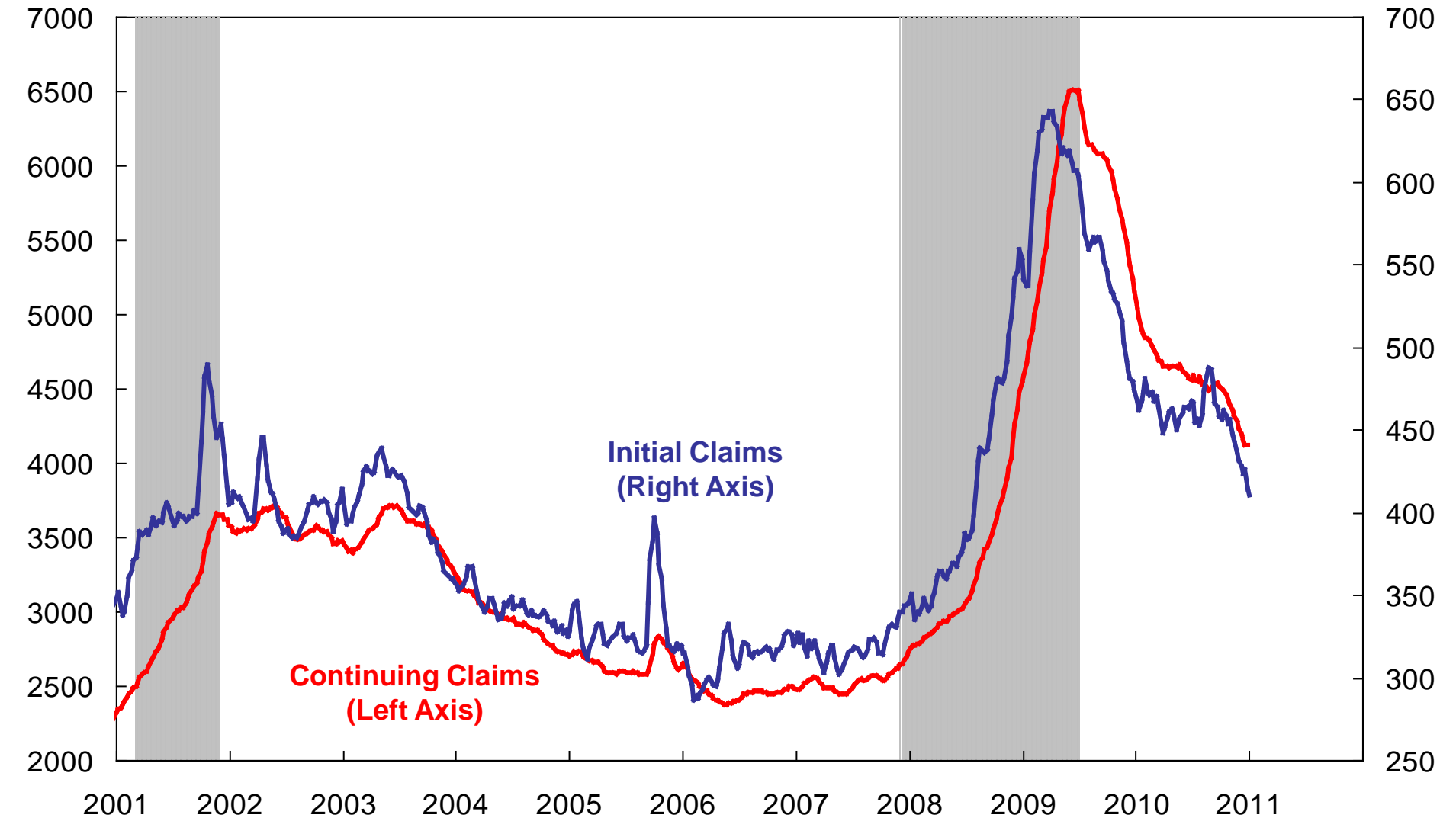


Source: Bureau of Labor Statistics

# Unemployment Insurance

4-Week Moving Average

4-Week Moving Average

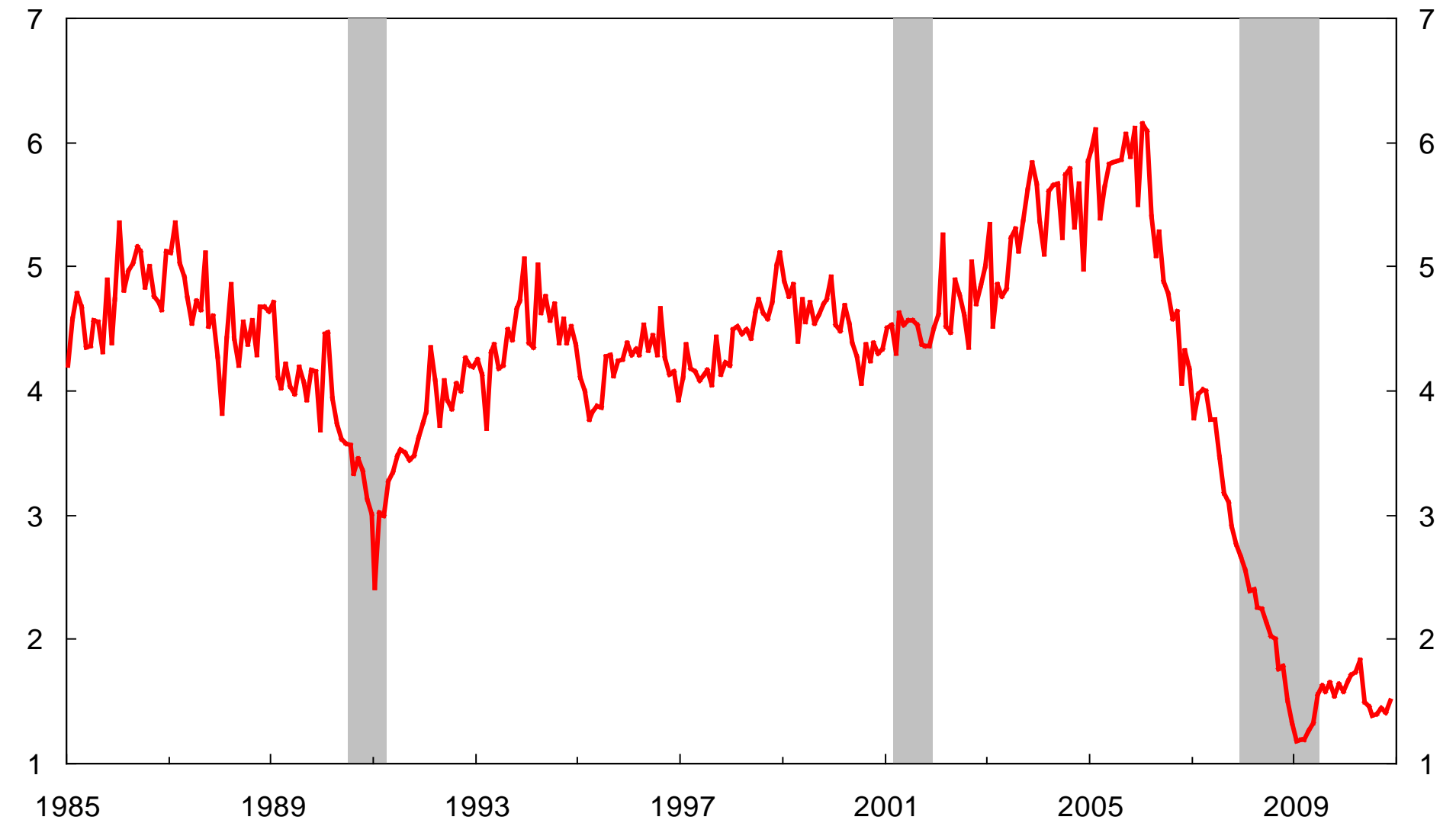


# Ratio of Housing Starts to Population

## Single-Family Homes

Starts per 1,000,000 people

Starts per 1,000,000 people

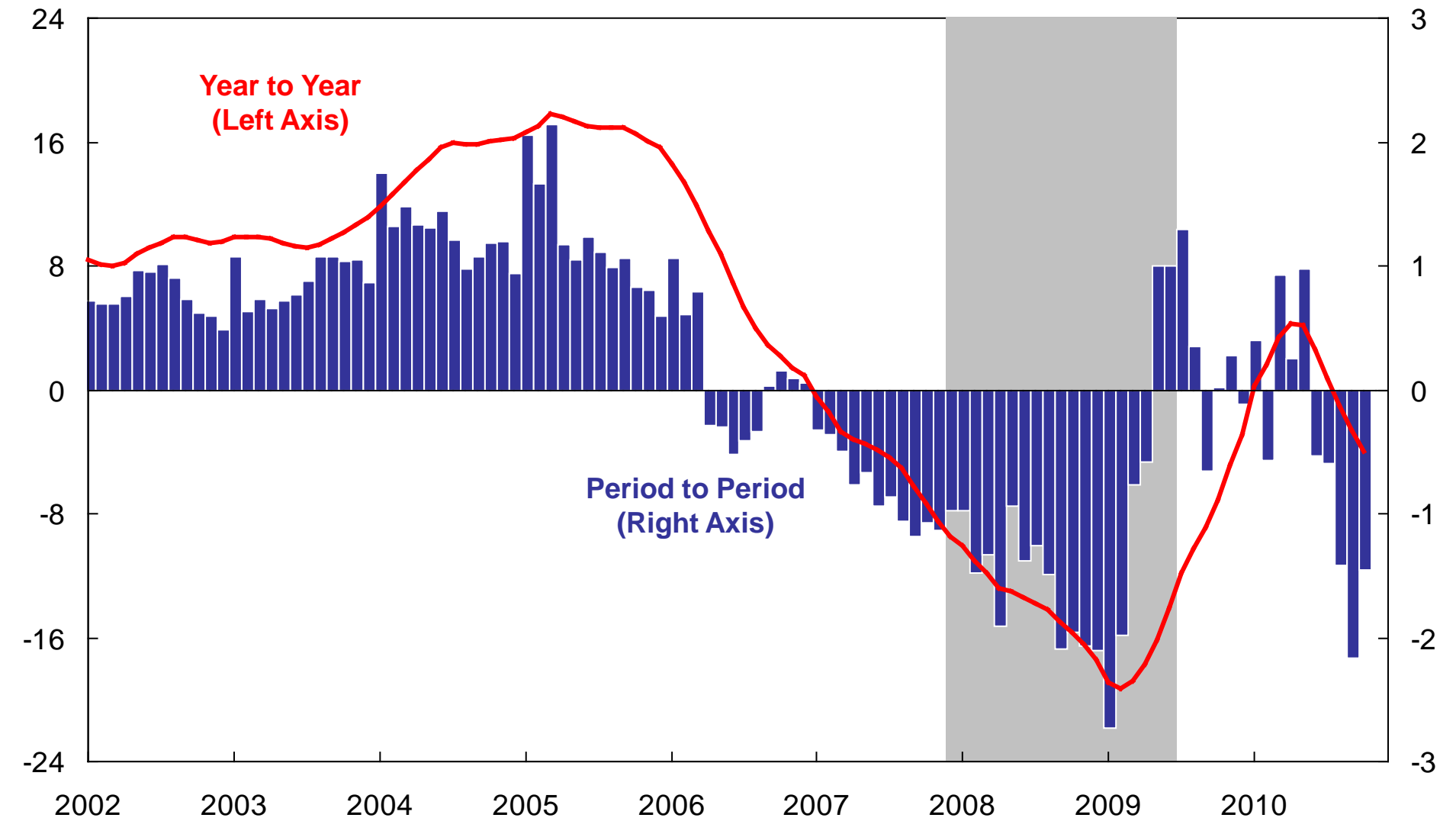


# CoreLogic National Home Price Index

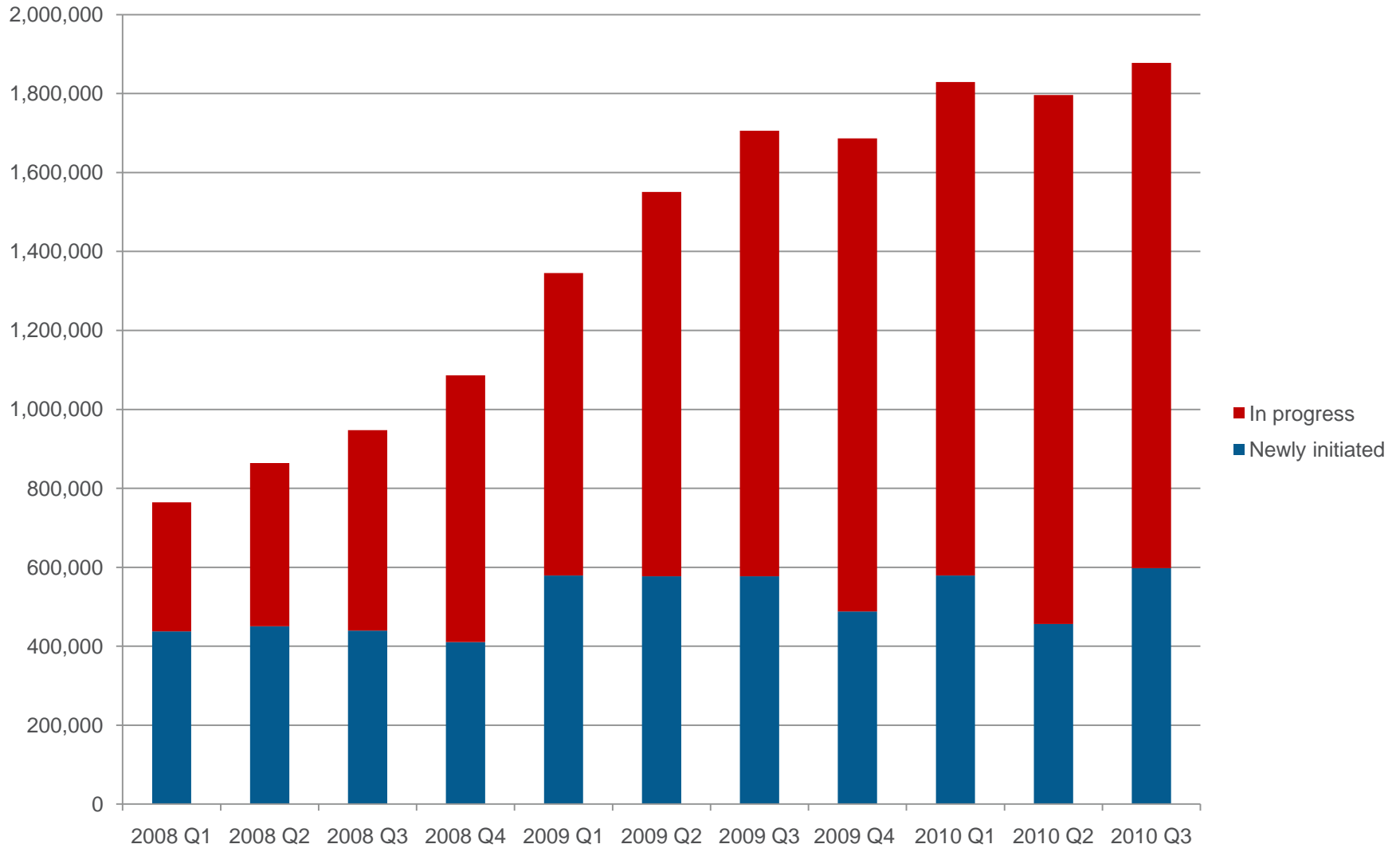
## Including Distressed-SA

% Change

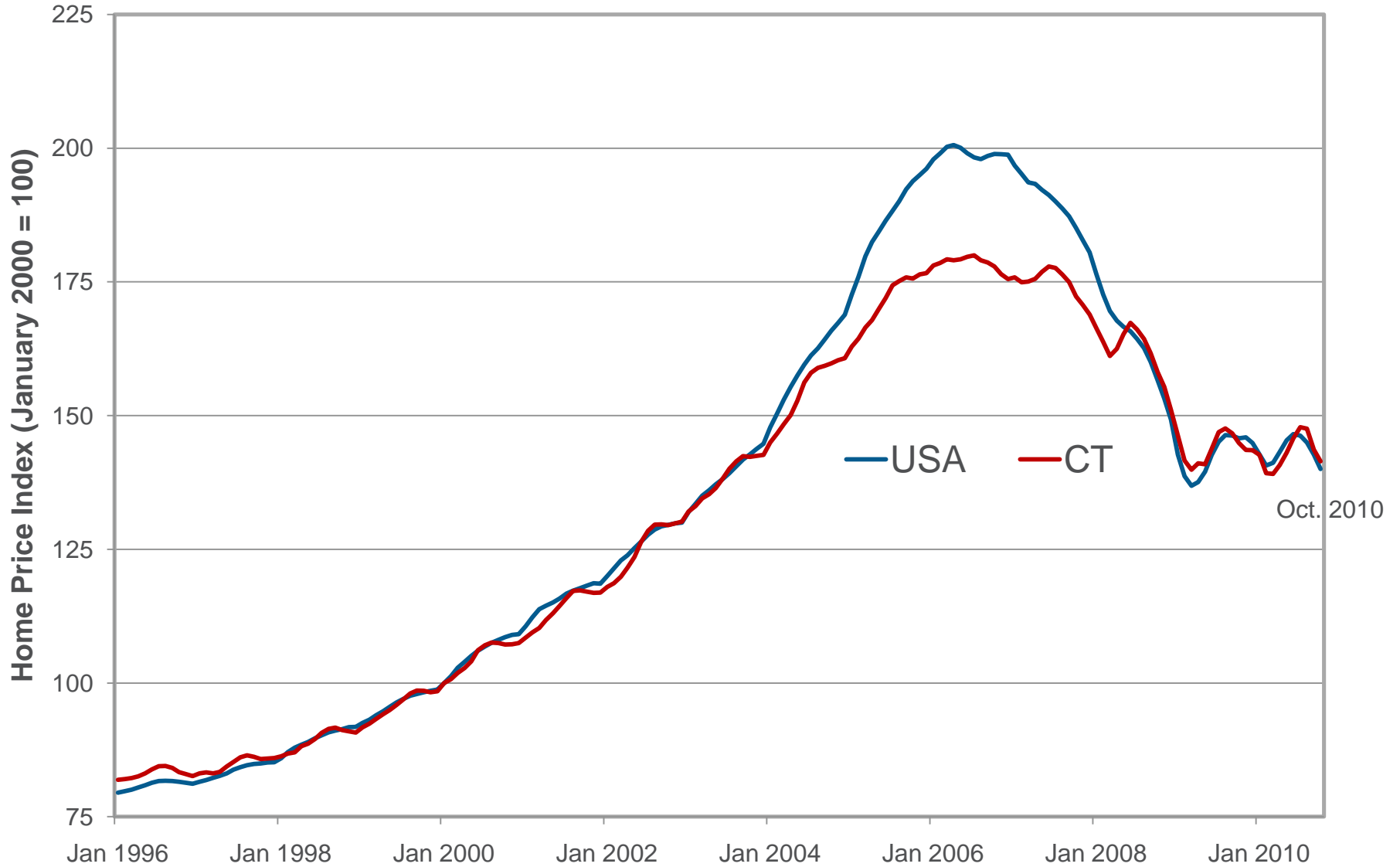
% Change



# Growing Foreclosure Pipeline:



# Repeat-Sale Home Price Index for Connecticut and USA



Note: Home price index based on repeat sales; includes all transactions.

Source: CoreLogic